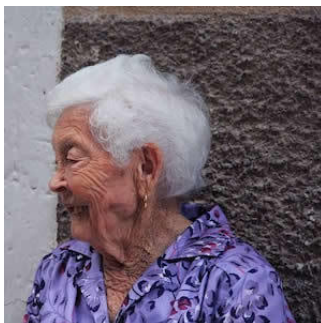


---

## Study: Identifying At-Risk Patients with Elder Risk Assessment



---

A simple risk score can predict critical illness in the next two years in seniors seen in primary care, according to a study published in *Clinical Interventions and Aging*. Use of the model could assist in planning care transition, programmes for prevention of critical illness and prompt advance care planning, according to researchers.

Michelle Biehl and colleagues from Mayo Clinic conducted a retrospective study to see if there was a relationship between a high elder risk assessment (ERA) score in primary care and later need for intensive care. They found that up to 14% of the highest risk population suffered from critical illness within 2 years of their primary care visit. The ERA index score uses administrative data that is part of a routine clinical visit and is available electronically, and weighs age, previous hospital stay, and comorbid illnesses within the mechanism. A score over 16 indicates a high risk of later hospitalisation.

See Also: [Study: When to Admit Geriatric Patients and Avoid the ICU](#)

Mayo Clinic already uses the ERA score electronically at the point of care to facilitate efficient enrolment of patients into clinical care transitions and palliative homebound programmes aimed at the prevention of critical illness and rehospitalisation in high-risk patients.

Image Credit: Pixabay

Published on : Sat, 6 Aug 2016