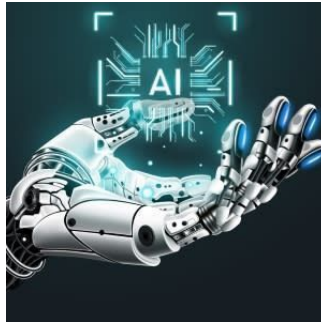


---

## Microsoft and Epic Expand AI Partnership to Accelerate Generative AI's Influence in Healthcare



---

Epic is leveraging Microsoft's AI expertise to introduce a broader range of tools designed to assist clinicians in efficiently managing their time and accessing vital information during patient care. They have been at the forefront of advancing generative AI within the healthcare industry.

By synergising Microsoft's expansive cloud and AI technologies with Epic's profound insights into the healthcare sector and clinical workflows, they can collaboratively tackle numerous prevailing challenges faced by clinicians.

This initiative will extend secure access to AI-driven clinical insights and administrative tools across a diverse array of Epic modules. Ultimately, the aim is to improve patient care, bolster operational efficiency, better healthcare experiences, and reinforce the financial stability of healthcare systems worldwide.

Their collaborative effort is geared towards swift deployment of numerous co-pilot solutions that securely harness the inherent value unlocked by Microsoft Cloud and their AI technologies. The aim is to accelerate documentation through text suggestions and swift reviews with in-context summaries; furthermore, streamlining manual processes to enhance administrative efficiencies. For example, through an AI-driven solution, designed to offer medical coding staff with suggestions based on clinical documentation within the EHR.

Through the utilisation of Azure, OpenAI Service Epic is set to deliver generative AI exploration, which is expected to play a pivotal role in advancing the study of rare diseases and bridging gaps in clinical evidence using real-world data.

The U.S. Department of Health and Human Services have forecasted that by 2025 there will be a widespread shortage of 90,000 physicians across the nation. This scenario is compounded by the fact that 40% to 60% of clinicians express burnout. In addition to these challenges, healthcare providers are grappling with financial constraints while striving to provide high-quality care in a streamlined manner.

Epic's strategy of harnessing Microsoft's technology and infrastructure represents an unprecedented endeavor. This joint effort, conducted in close partnership with healthcare providers, is committed to tackling the challenges affecting the healthcare industry.

Source: [Microsoft](#)

Image Credit: [iStock](#)

Published on : Thu, 31 Aug 2023