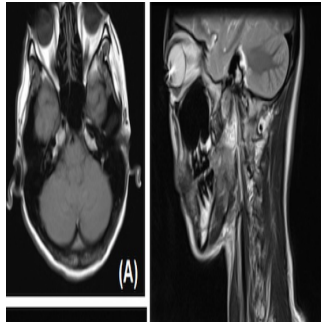


---

## Circle Contact Lenses are Potential MRI Hazard



---

A case report published in BMC Medical Imaging recommends that radiologists be aware of the potential risk of scanning circle contact lens by MRI.

Circle contact lenses, also known as colour contact lenses and big eye contact lenses, are a type of cosmetic contact lens. It is not widely known that circle contact lenses usually contain iron oxide and other metals, making their use during magnetic resonance imaging (MRI) a potential hazard.

The authors present a rare case of incidental discovery of circle contact lenses by MRI and MRI images of circle lenses in vitro.

The authors conclude that not only radiologists and radiographers but also referring physicians should be familiar with the imaging findings and potential risk of scanning circle contact lenses by MRI.

Reference: "Incidental discovery of circle contact lens by MRI: you can't scan my poker face, circle contact lens as a potential MRI hazard."  
Hiroyuki Tokue, Ayako Taketomi-Takahashi, Azusa Tokue and Yoshito Tsushima. BMC Medical Imaging 2013, 13:11 doi:10.1186/1471-2342-13-11. Published: 25 March 2013

Published on : Tue, 26 Mar 2013